



# City of Terrell Solid Waste Services

## Curbside Trash Collection Schedule

Waste Connections Lone Star, Inc. is the solid waste contractor for the City of Terrell. Curbside collection service is provided to each residential unit twice a week:

- Monday/Thursday or Tuesday/Friday. **See map on reverse to determine pickup day.**
- **All trash must be in bags** and placed at curbside by 7:00 a.m. on the designated collection day. No loose trash is allowed inside or outside the container.

## Residential Collection

- Citizens are responsible for providing their own trash cans. All cans must have handles with adequate strength for lifting. The receptacle shall be constructed of plastic, metal or fiberglass. No open barrels. (See back for pictures of acceptable containers)
- Residents are limited to fifteen (15) bags, cans, and/or bundles (newspaper/magazines) each pick-up day. The total weight of a bag and its contents shall not exceed thirty-five (35) pounds. The total weight of the container and its contents shall not exceed fifty (50) pounds.

## Bulk Collection Days

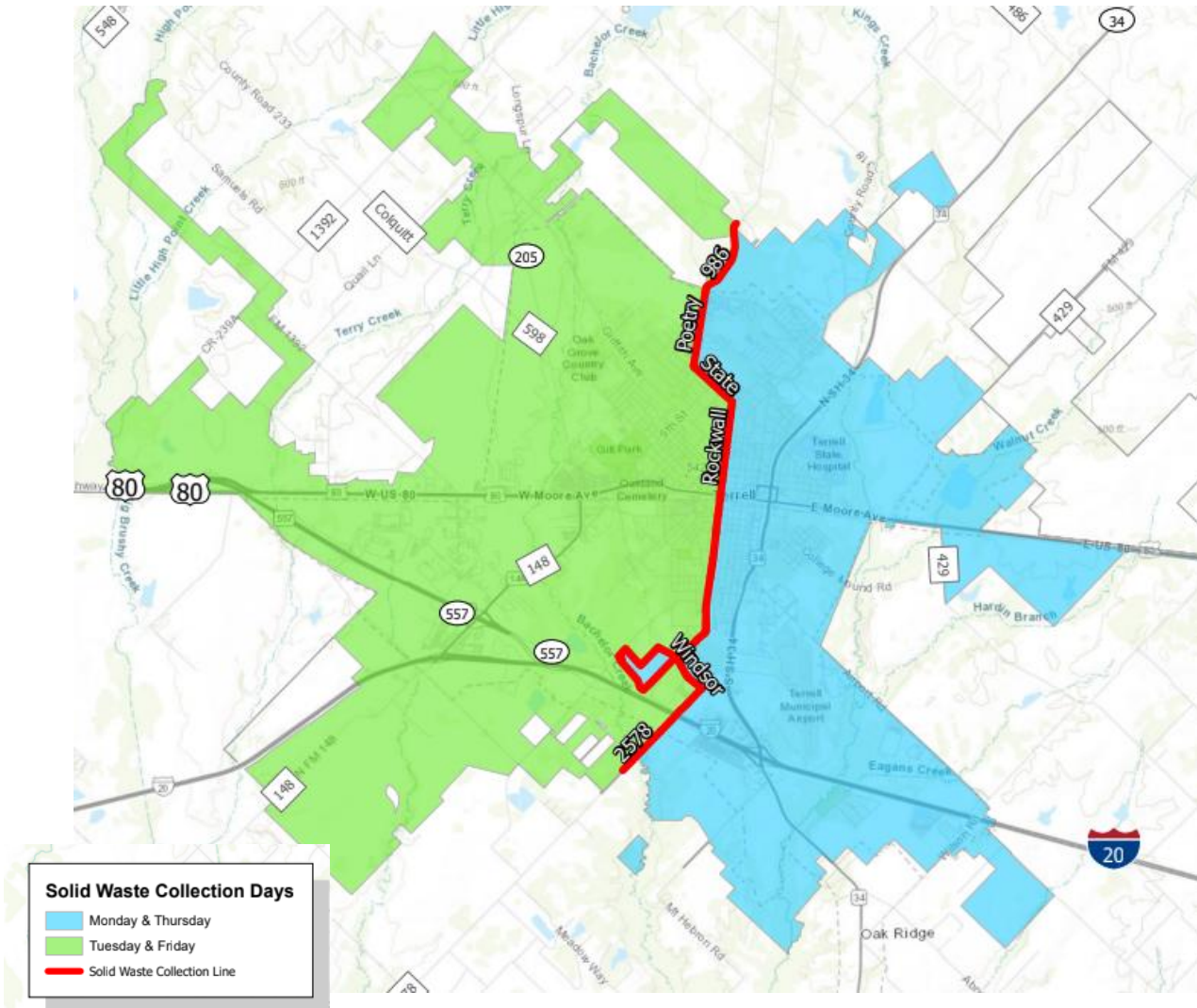
- On the second collection day of each week, **Thursday or Friday**, those who receive residential service can set out up to two (2) bulky items for collection.
- Items should be placed out for collection no earlier than the Saturday before your scheduled collection day. Items should be placed neatly and in as tight a stack as possible. Items will not be picked up if they are placed by utility poles, mailboxes, trees, or parked cars. Do not block sidewalks, driveways or roadways. Items placed on vacant lots or in alleys will not be picked up.
- Please label any items that may not appear obvious for bulk waste collection.
- All appliances with Freon® must be drained and tagged by a licensed plumber before placing it at the curb for collection.

## Curbside Pick-up for Brush - must be at the curb by 7:00 am

- Bundled brush not exceeding four (4) feet in length, four (4) inches in diameter or fifty (50) pounds, can be set out at the curb on either Monday/Thursday or Tuesday/Friday route.
- Brush not bundled, that is no more than sixteen (16) feet in length, six (6) feet in width and three (3) feet in height for a total of five (5) cubic yards - the amount that will fit in the back of a pick-up truck, can be set out on the second pick-up day of the week.
- No single piece should be more than eight (8) feet in length, or 75 lbs.
- Brush should be separated from bulk items and household trash.
- Residents may request brush pick-up by submitting an email: [brush@terrelltx.org](mailto:brush@terrelltx.org).



## Solid Waste Collection Map by Zones



**Container Requirements:** Trash receptacle shall not be greater than thirty-five (35) gallons. The contents shall not exceed Thirty-five (35) pounds. The Receptacle shall be constructed of plastic, metal or fiberglass, having handles with adequate strength for lifting. The weight of the container and its contents shall not exceed (50) pounds.



Drum/Barrell

**Not Acceptable**



36-gal or Greater  
Plastic w/Wheels

**Not Acceptable**



35-gal Maximum  
Plastic w/Wheels

**Acceptable**



35-gal Maximum  
Plastic

**Acceptable**

For concerns about missed trash or information regarding trash  
collection and quotes for special pick-up, call:  
Waste Connections Lone Star, Inc. at (972) 524-1665 or (972) 686-5665.